

# Affordable Housing Developers & the Growing Wildfire Threat

Veronica Beaty  
Research Manager  
[veronica@calruralhousing.org](mailto:veronica@calruralhousing.org)

# California Coalition for Rural Housing

The California Coalition for Rural Housing (CCRH) is a statewide nonprofit organization that works to ensure affordable housing opportunities for low-income households in California. Formed in 1976 following a farmworker housing conference, CCRH is one of the oldest state low-income housing coalitions in the country. Through advocacy, community organizing, technical assistance, research and education, our goal is to make the case for rural housing improvement and strengthen the capacity of the nonprofit and public sectors to provide affordable housing and related facilities.



# Rural areas are particularly vulnerable to disaster

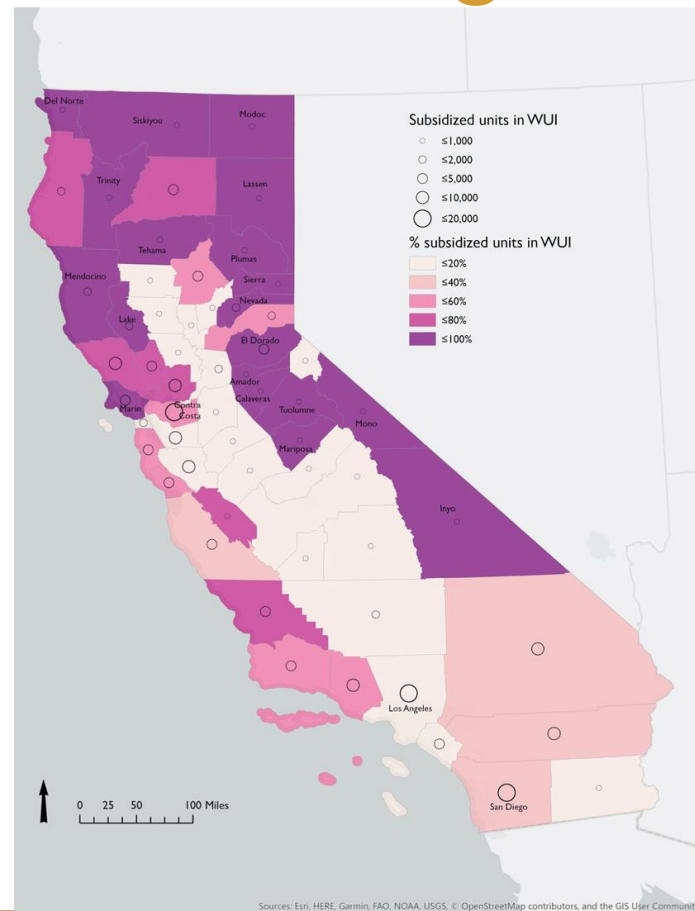
- Lack of infrastructure and adequate communication systems
- Limited first responders
- Lean municipal staff
- Jurisdictions that frequently lack housing expertise
- Limited accessible and affordable housing for displaced families and individuals



# Disasters as an affordable housing crisis multiplier

- **Damage to and destruction of limited affordable housing stock**
- Drives up homelessness
- Increases need for affordable homes
- Shortage of housing creates secondary displacement
- **Increasing costs**, including insurance, resilient building materials

*Community Housing Improvement Program's Paradise Community Village was destroyed in the Camp Fire*



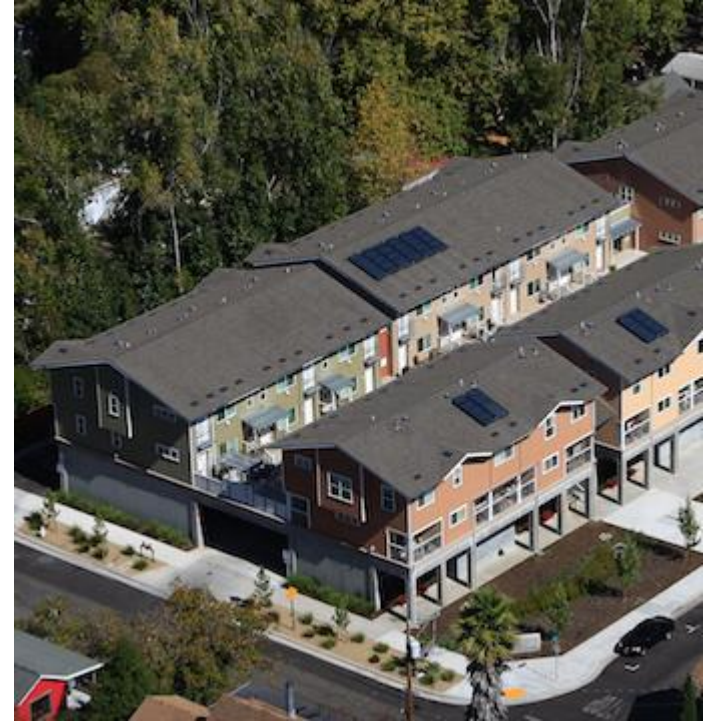
# Disadvantaged communities hit hardest

- Communities of color, people with disabilities, older adults, and low-income communities are more likely to be impacted at every stage
- Housing insecurity pre-disaster
- Insufficiently accounted for in disaster planning
- Most likely to suffer during a disaster
- Least well-served during disaster recovery



# Better Practices from our members

- Creation of disaster-focused staff positions
- Preemptive partnerships with organizations such as United Way, Red Cross, and disaster-preparedness initiatives
- Modification of building design and materials
- Prepare for the disaster before you are in a disaster, including building community support for affordable housing



*Burbank Housing's Fife Creek community in Guerneville is built upon podiums and stilts to mitigate flood risk*

# Key Takeaways

- Meeting existing affordable housing need is a disaster preparedness strategy
- Affordable housing developers are valuable partners in all stages of the disaster process
- Disaster recovery must prioritize the needs of vulnerable populations
- Restoring and creating affordable housing opportunities is critical in disaster planning and recovery
- Incorporate disaster resiliency into planning where and how homes are built



Subscribe to our mailing list at [calruralhousing.org](https://calruralhousing.org) to keep up to date on our disaster-related research and advocacy!